



# ABET

**Michael K J Milligan, PhD, PE**

*ABET Executive Director*

27 September 2013

# Who is ABET?



## ABET Essentials

# ABET is a Program\_Accreditor

*Also called “Specialized” Accreditor*

- Not-for-profit, non-governmental organization
- Evaluates academic programs
  - **Not** Institutions, degrees, or courses
  - AS, BS, MS levels
- Peer review process
  - Volunteers from ABET’s 33 technical societies
- Recognized in U.S. by Council for Higher Education Accreditors (CHEA)
- Founded in 1932
  - Engineers' Council for Professional Development (ECPD)

# ABET History

## ➤ Seven Founding Societies

- American Society of Civil Engineers (**ASCE**)
- American Institute of Mining and Metallurgical Engineers (now the American Institute of Mining, Metallurgical, and Petroleum Engineers (**AIME**))
- American Society of Mechanical Engineers (**ASME**)
- American Institute of Electrical Engineers (now **IEEE**)
- Society for the Promotion of Engineering Education, (now the American Society for Engineering Education (**ASEE**))
- American Institute of Chemical Engineers (**AIChE**)
- National Council of State Boards of Engineering Examiners (now **NCEES**)

# ABET History

## ➤ Original purpose

- Joint program for “upbuilding” engineering as a profession
  - Set standards
  - Publish the Codes of Ethics
  - Professional development materials

## ➤ Almost immediately began developing as an accreditation agency

- First engineering program, 1936
- First engineering technology program, 1946



National Institute of Ceramic Engineers (NICE)



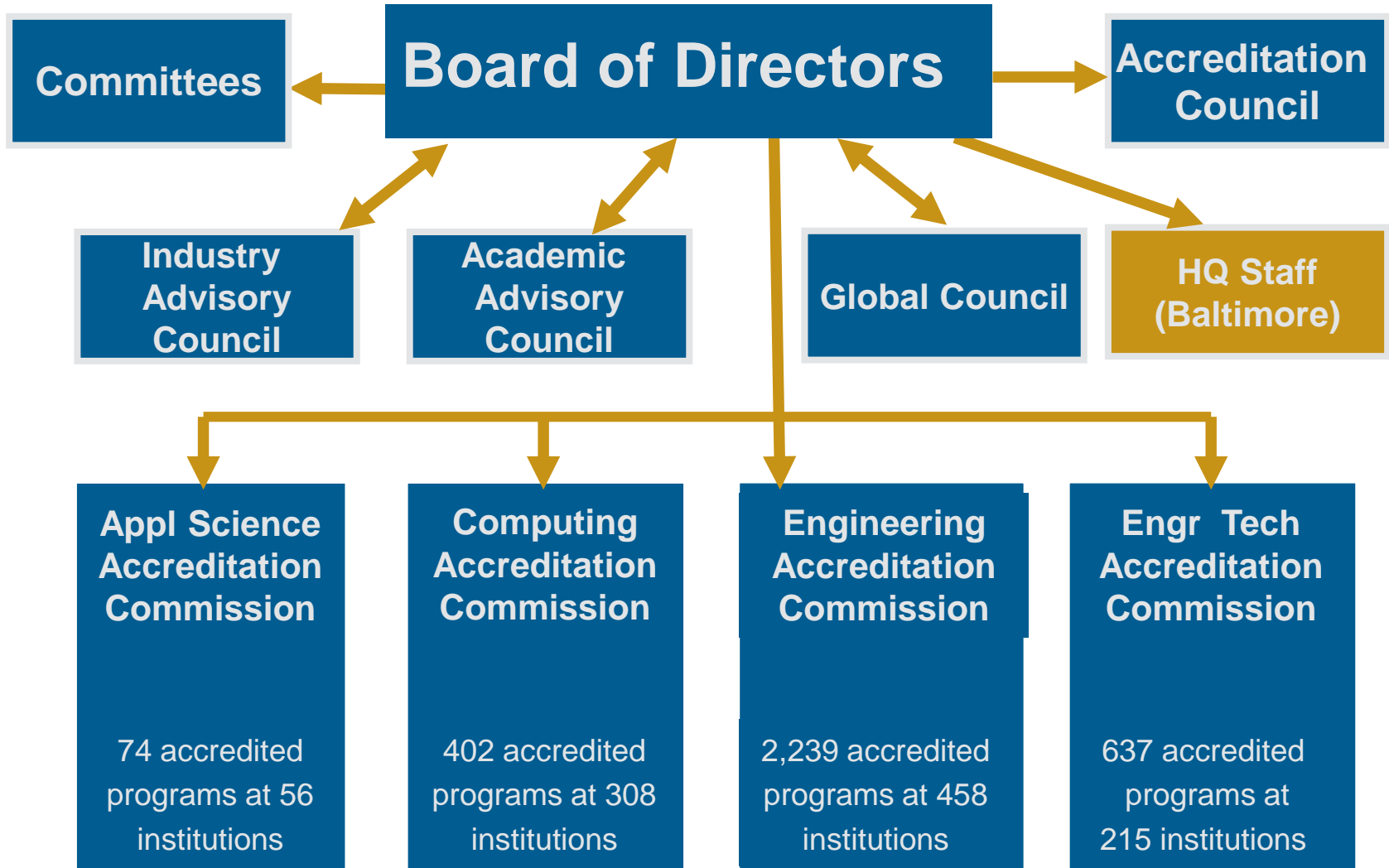
# ABET's 33 Member Societies



# Member Societies

- Represent “the profession”
- Develop program criteria
- Appoint members to the ABET Board
- Nominate member to ABET Commissions
- Recruit and select Program Evaluators (PEV) candidates using PEV competency model
- Assign PEVs to evaluate programs
- Monitor PEV performance

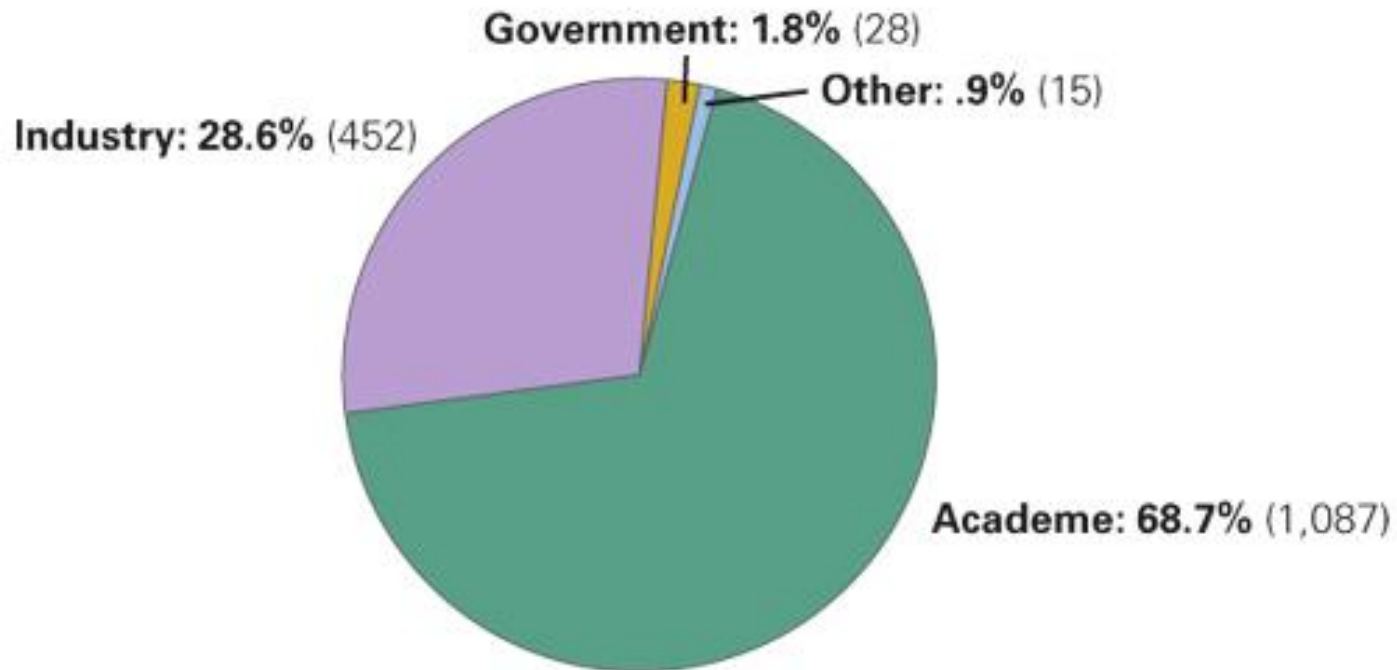
# ABET Organizational Structure





# ABET Volunteers

Over 2,200 from Academe, Industry, and Government



# ABET Organizational Structure

Volunteer-Driven: *2,200+ Volunteers*

## Board of Directors

- Nominated by member societies
- Provide strategic direction and plans
- Decide policy and procedures
- Approve criteria

## 4 Commissions

- ASAC, CAC, EAC, ETAC
- Make decisions on accreditation status
- Implement accreditation policies
- Propose changes to criteria

## Program Evaluators

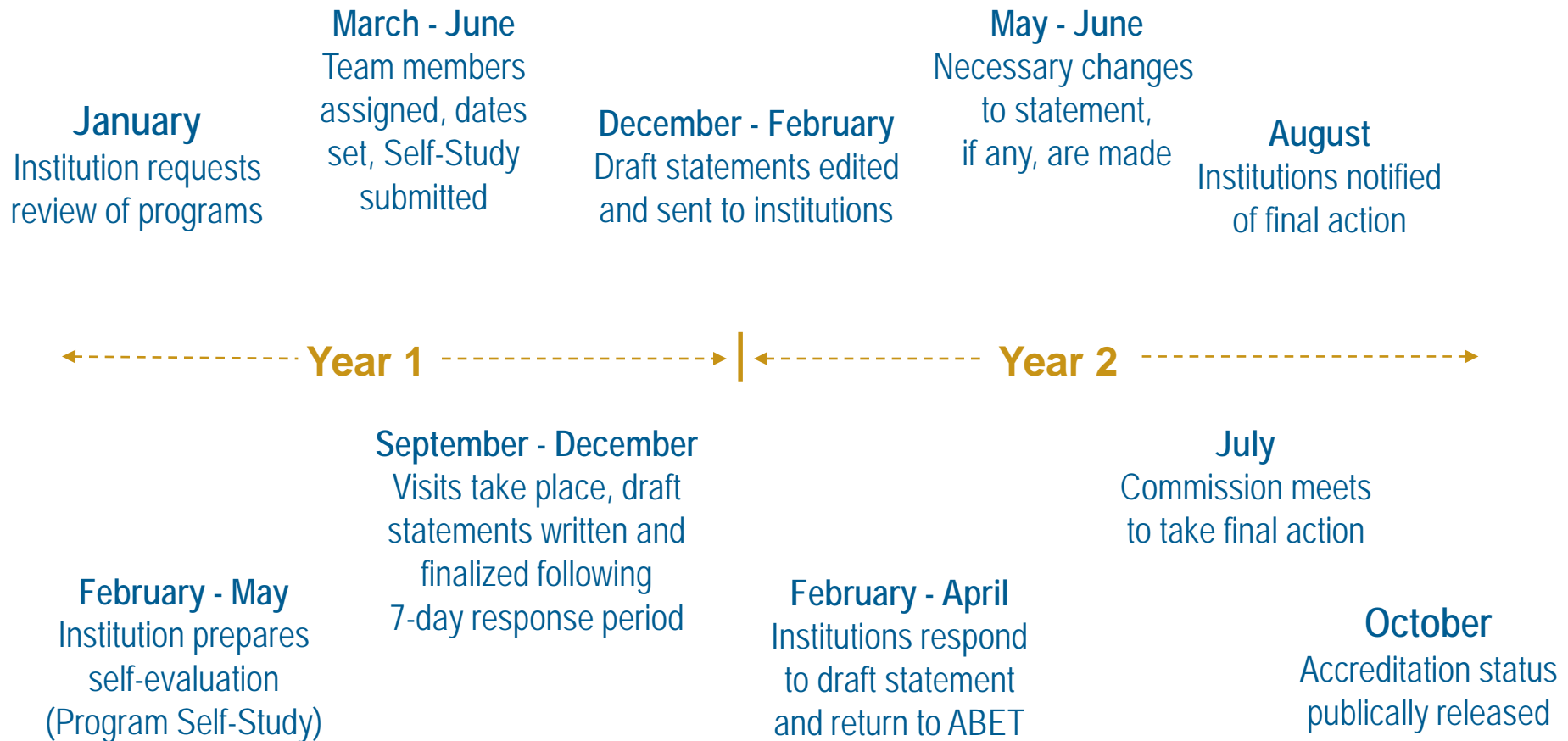
- Visit campuses
- Evaluate individual programs
- Make initial accreditation recommendations
- “Face of ABET”

**100% of accreditation decisions are made by Volunteers**

**ABET Headquarters (Baltimore): ~38 full, part time staff**

# Accreditation Timeline

## *18 month process*



# Global Accreditation Activities

As of 1 October 2012

- Accredited **3,205** programs at **659** colleges & universities in **24** countries
- Non-U.S. Programs
  - Accredited **324** programs at **64** institutions in **23** countries
  - Uniform accreditation criteria, policies and procedures used for all visits, regardless of location